



# Chimacum School Matters

*News from Your Chimacum School District*

Volume Seventeen, Issue One

Winter 2012

## Experts created CSD road map for repairs, updates

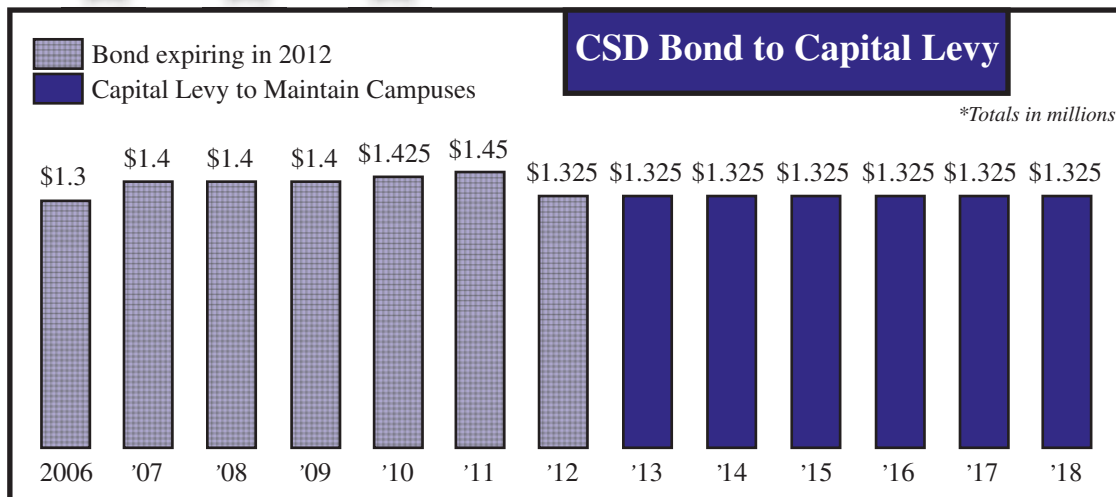
Chimacum School District's 2013-2018 capital projects levy request is based upon the findings of a recent state-funded study and survey. Structural, mechanical and electrical engineers worked with an architect to evaluate the facilities. Center to their report was the district's master plan, created by expert and community input prior to the upgrades to the facilities in the late 1990s.

The detailed list the Chimacum School District has received from the experts is a fantastic resource for planning and budgeting. The solid parts of the system are listed, as well as the areas that are failing.

Of the \$18 million in identified needs, CSD is asking for \$7.95 million. Every course of action has residual benefits that save money.



**The exterior wood on many of the buildings is so old and rotted, it won't even take paint for preservation. The furred T1-11 siding has warped and no longer protects the buildings. The sub-framing underneath is also rotted in places. Roof leaks abound, for many reasons, in many areas. Stained acoustical ceiling tiles tell the tale. To preserve the structural integrity of the facilities, and prevent permanent damage, they must be protected from water intrusion. In some spots, walls are not anchored to roof systems to meet current codes.**



**Your Chimacum School Board waited until the 1997 voter-approved bond was set to expire, before seeking dollars to maintain the community's investment in property and education.**

## Tax breaks...

The homeowner's taxes resulting from this levy may be a deductible expense on his/her federal income tax.

A disabled person, or someone 61 years of age and older, may be eligible for a levy tax exemption. If you have questions regarding this program, please contact the Jefferson County Assessor's Office at 360.385.9105.

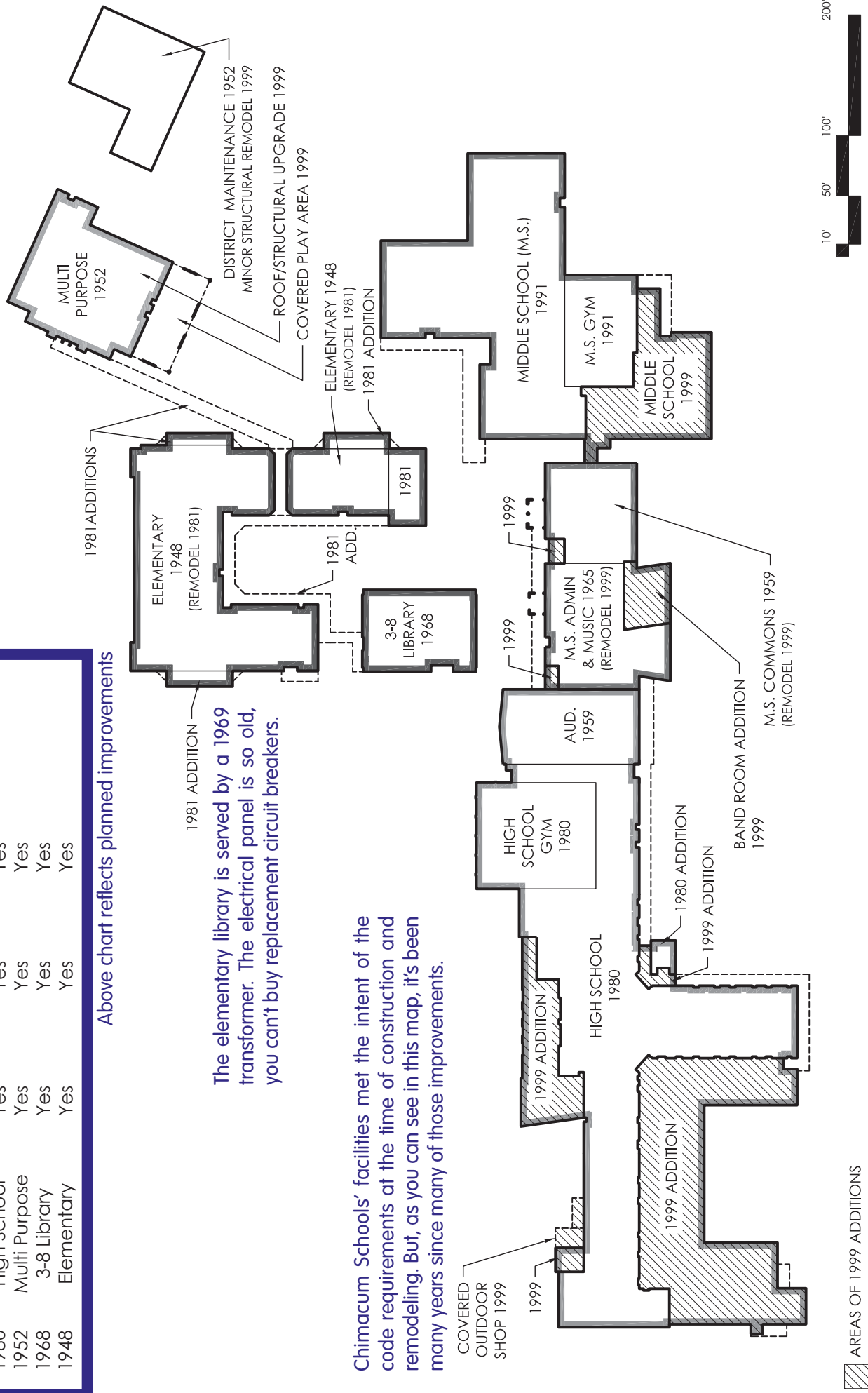
**AGE BUILDING HEATING LIGHTING SIDING REMODEL**

AGE	BUILDING	HEATING	LIGHTING	SIDING	REMODEL
1959	Auditorium	Yes	Yes	Yes	Yes
1980	Gym - HS	Yes	Yes	Yes	Yes
1980	High School	Yes	Yes	Yes	Yes
1952	Multi Purpose	Yes	Yes	Yes	Yes
1968	3-8 Library	Yes	Yes	Yes	Yes
1948	Elementary	Yes	Yes	Yes	Yes

Above chart reflects planned improvements

The elementary library is served by a 1969 transformer. The electrical panel is so old, you can't buy replacement circuit breakers.

Chimacum Schools' facilities met the intent of the code requirements at the time of construction and remodeling. But, as you can see in this map, it's been many years since many of those improvements.



▨ AREAS OF 1999 ADDITIONS



# Capital levy different than a bond

The capital projects levy is a short-term funding solution that saves the taxpayers money. The monies are collected annually, over the six-year period, rather than all up front. There is no interest paid on the money because bonds do not need to be sold to investors to accumulate the funds.

Bonds are used for large-scale construction and remodeling. The 1997 bond, now retiring, was used to for the construction of the primary school

and major renovations on Chimacum Schools' grades 3-12 campus.

The 2012 six-year capital levy request is for major improvements to our campuses. While the various systems have been very well maintained, many are beyond their life expectancies. Inefficient heating, lighting and communications systems, as well as deteriorating buildings, have become nearly impossible for our experts to repair.

*Some portions of the buildings, including the auditorium, do not have fire sprinklers.*

## Tax rates steady

The tax rate per thousand dollars of assessed property value is but an estimate, based on predicted growth. Tax rates should not vary much from the 2012 rate of the expiring bond, estimated at \$.812 per thousand. The capital projects levy rates for 2013 through 2018 are estimated at: \$.813 per thousand, \$.808, \$.844, \$.839, \$.833 and \$.828. Historically, the actual rates paid by the taxpayer were often lower than the rates estimated at the time levies and bonds received voter approval at the polls.

**Phone Facts: Our phone system has no voice mail for teachers. Parts are no longer made for it. To date, our tech has been able to find parts on eBay. No parts: no phones.**



# Supt. highlights CSD capital projects levy



**Superintendent Craig Downs**

The Chimacum School District Board of Directors approved a capital projects levy that will come before the voters this February. This levy will be used to make much-needed repairs and improvements to various systems in the district. The district made a concerted effort to maintain these systems until the existing bonds, which built Chimacum Creek Primary and made additions to the high school, are retired on Dec. 1, 2012. Since the capital projects levy will start in 2013, there should be no increase to our patrons' tax liabilities.

Using a study and survey conducted by outside engineers, architects and

efficiency experts, the district identified desperately needed system upgrades within its long-range master plan. Many of the areas to be upgraded are becoming nearly impossible to maintain. Roofs, heaters, electrical equipment, siding, phone system, technology and lighting need improvement or replacement.

There are heaters, for example, that have long outlasted their expected lives. The auditorium has a 1957 boiler. 1957! The parts used to make repairs to the very inefficient heaters have become nearly impossible to find.

Some of the roofs in the district are not repairable and need to be replaced. Chimacum Middle School has a 20-year-old flat roof.

Additionally, our electrical and phone systems have outlasted their life expectancies and parts are difficult to find. Most of the teaching staff does not have voice mail and they cannot receive outside calls in their classrooms.

We have outgrown our electrical capacity. Getting enough outlets in rooms becomes impossible, as our student technology needs continue to grow. State online testing requirements continue to increase the demand for

computers and the infrastructure to support their use. Our lighting systems are also very inefficient: replacing them would have long-term savings.

We plan to remodel our auditorium. This valuable community resource gets a lot of use and we want make needed repairs and enhancements. Improving the gymnasium's lighting, flooring and bleachers is another priority in this high-use building. We will not only extend the useful life of these facilities, but also create higher levels of efficiency for long-term savings.

This capital levy is a significant part of growing our capacity to continue to be an excellent school system of which the entire community can be proud. The school board believes it is the right time to make this investment in our facilities. Waiting until now, when the construction bonds end, avoided an additional burden on our community.

We value the long-established community support we have received. All of us here at Chimacum Schools are committed to being good stewards of our school facilities to maintain our quality educational programs.



*Mail-in ballots must be returned or postmarked by Tuesday, Feb. 14.*

			1	2	3	4
5	6	7	8	9	10	11
12	13	14	15	16	17	18
19	20	21	22	23	24	25
26	27	28	29			

**FEBRUARY**

**Chimacum School Board:**

**Cammy Brown  
Ted Friedrich  
Kevin Miller  
David Robocker  
Kris Butler**

**Superintendent:  
Craig Downs**

*The Chimacum School District does not discriminate on the basis of race, color, national origin, age, gender or disability.*

**Editor: Sandy Hershelman**  
[www.sandyhershelman.com](http://www.sandyhershelman.com)

*Printing, in part, courtesy of Printery.com.*

**Chimacum School District #49**

**P.O. Box 278  
Chimacum, WA 98325-0278**

NonProfit  
Organization  
U.S. Postage

**PAID**  
Permit No. 3  
Chimacum, WA  
98325

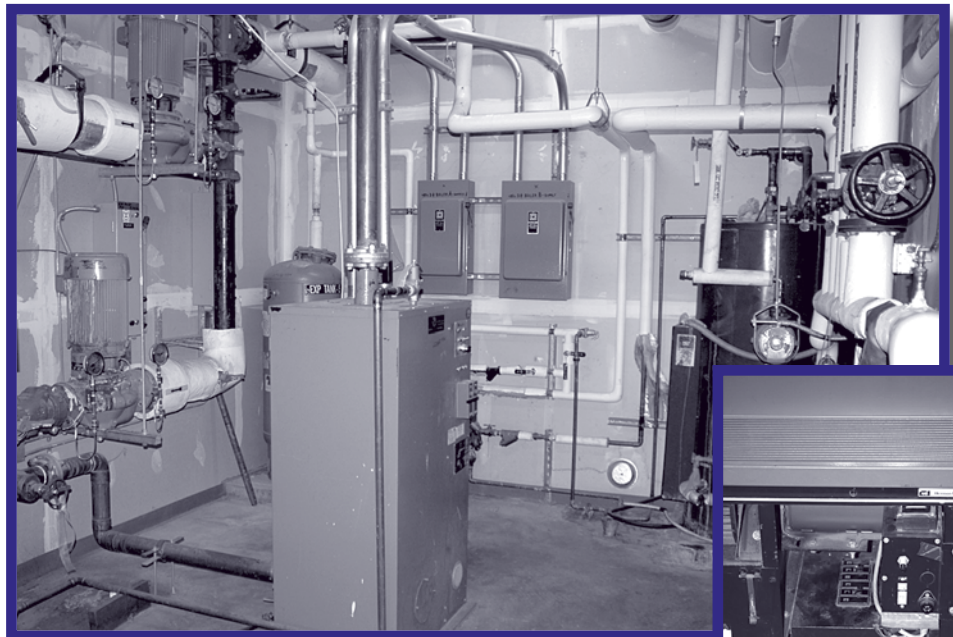
**Local Postal Patron  
ECRWSS**

## Chimacum's ancient heaters need efficient updates

Envision one mammoth baseboard heater, with a fan, inefficiently attempting to warm a school building. If your room is near the source, you're hot; at the end of the line, you freeze. In another building, the 1950s' steam boiler is 20-30 years past its prime.

Much of Chimacum Schools' heating and ventilation system has reached the end of its lifespan. Many parts in the unit ventilators do not function and can no longer be purchased. In the middle school, an undersized electric boiler is constantly asked to do more than it's meant to. Large leaks in the pneumatic system in other parts of the campus reiterate: these systems are beyond their serviceable lives.

CSD's single pane windows do not meet current state energy code requirements—or codes from 18 years ago, either, when the energy code had a major revamping.



**The undersized middle school heater was supposed to be a “temporary fix” in 1992. Inset: A 1969 elementary school heater, kept working with parts from defunct heaters.**

